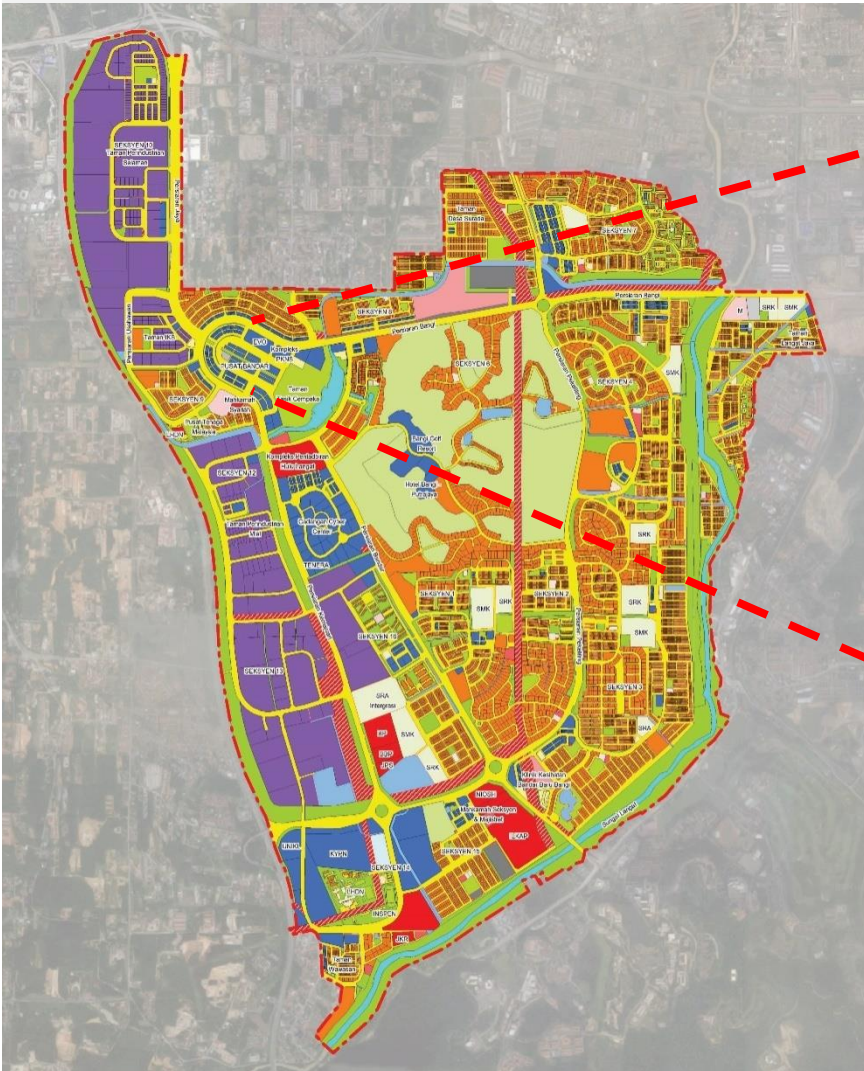


# JAWATANKUASA PELAKSANA PERBANDARAN RENDAH KARBON BANDAR BARU BANGI BIL 1/2019



# KAWASAN KAJIAN



PLOT 1



PLOT 3



PLOT 5



PLOT 7



PLOT 9



PLOT 2



PLOT 4




PLOT 6



PLOT 8

# CADANGAN TINDAKAN PENGURANGAN KARBON KAWASAN KAJIAN

Assessment	Baseline 2017	Final Year 2019 (opt 3)
Population	4,633	5109 (including 199 occupied unit)
BAU	2931.01 tCO <sub>2</sub> /yr	2932.95 tCO <sub>2</sub> /yr
Trees	1816	<b>+290 (+16%)</b>
Waste	2028.378 tonnes	Landfill - <b>341.71 tonnes (17%)</b> Recycle – cooking oil + <b>127.56 tonnes</b> Recycle - mixed recyclables + <b>204.03 tonnes</b> Recycle – compos + <b>10.12 tonnes</b>
LCS	2931.01 tCO <sub>2</sub> /yr	2,817.06 tCO <sub>2</sub> /yr <b>(Reduction of 113.95 tCO<sub>2</sub>/yr)</b>
LCCF Certification	-	4% 

3.2%  
sequestration

# CADANGAN 1 – PENGURUSAN SISA PEPEJAL (KOMPOS)

109.5 TAN/  
TAHUN@  
9.12  
TAN/BULAN

## PROGRAM KOMPOS

**STATUS  
SEMASA** 204.55 TAN  
(15/3-31/12)  
Anggaran 22.73  
TAN/bulan



# CADANGAN 2 – PENGURUSAN SISA PEPEJAL (KITAR SEMULA MINYAK MASAK TERPAKAI)

90.37 TAN/  
TAHUN  
7.53  
TAN/BULAN

## PROGRAM MINYAK MASAK TERPAKAI

**STATUS SEMASA** 12.95 TAN  
(15/3-31/12)  
Anggaran 1.439  
TAN/bulan



# CADANGAN 3 – PENGURUSAN SISA PEPEJAL (PENGASINGAN SISA PEPEJAL)

122.42 TAN/  
TAHUN  
10.20  
TAN/BULAN

## PROGRAM PENGASINGAN SISA PEPEJAL

**STATUS  
SEMASA** 17.671 TAN  
(15/3-31/12)  
Anggaran 1.963  
TAN/bulan



# STATUS TINDAKAN

SASARAN	PERUNDING (TAN)	PURATA (TAN)	MPKJ (TAN)	PURATA (TAN)	STATUS (TAN)
KOMPOS	10.121	0.85	109.50	9.12	204.55 (15/3-31/12) Anggaran 22.73 TAN/bulan
MINYAK MASAK	127.56	10.63	90.37	7.53	12.95 (15/3-31/12) Anggaran 1.439 TAN/bulan
KITAR SEMULA	204.03	17.00	122.42	10.20	17.67 (15/3-31/12) Anggaran 1.963 TAN/bulan
JUMLAH	341.711	28.48	322.29	26.85	235.17 (26.13/bulan)



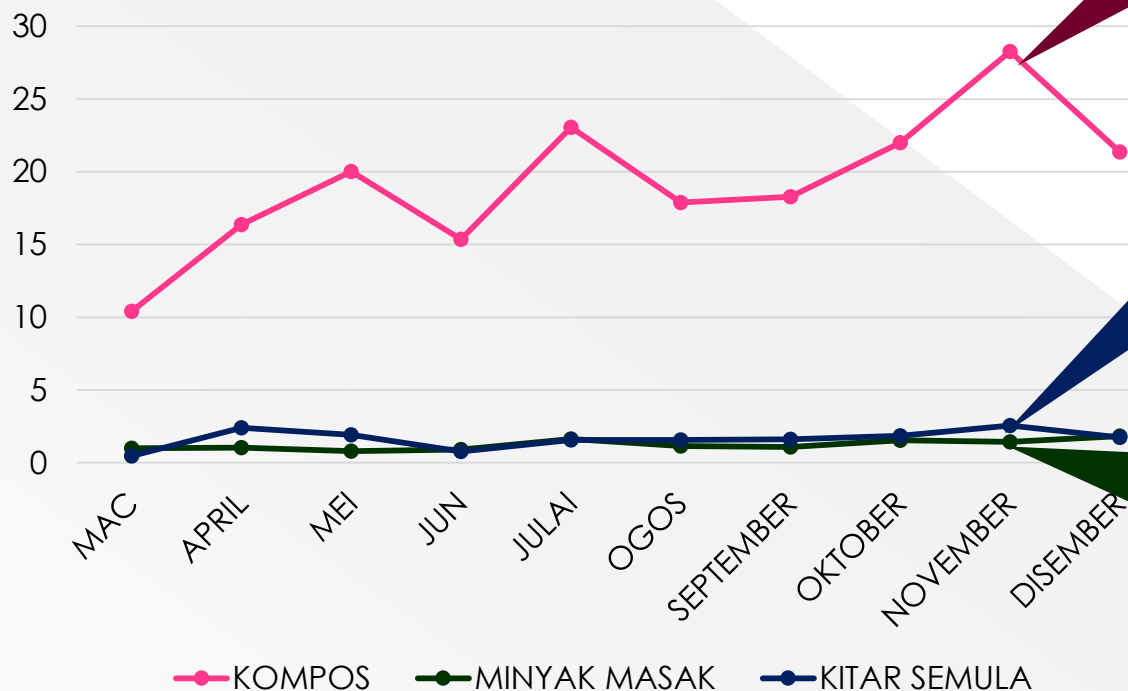
# PERBANDINGAN SASARAN DAN PENCAPAIAN

SASARAN	PERUNDING (TAN)	MPKJ (TAN)	KUTIPAN SETAKAT 31 DIS 2018 (TAN)	STATUS
KOMPOS	10.121	109.50	204.55	✓
MINYAK MASAK	127.56	90.37	12.95	14.33%
KITAR SEMULA	204.03	122.421	17.67	14.43%
<b>JUMLAH</b>	<b>341.711</b>	<b>322.291</b>	<b>235.17</b>	<b>72.97%</b>



# KADAR KUTIPAN HINGGA TAHUN BERAKHIR DISEMBER 2018 (15/3/2018 HINGGA 31/12/2018)

Kadar Kutipan Sisa Pepejal (Tan/Bulan)



**KOMPOS (Tan/Bulan)**

MAC	10.423	OGOS	17.090
APRIL	16.380	SEPTEMBER	18.285
MEI	20.020	OKTOBER	21.995
JUN	15.370	NOVEMBER	28.271
JULAI	23.060	DISEMBER	21.360

**MINYAK MASAK (Tan/Bulan)**

MAC	0.996	OGOS	1.161
APRIL	1.049	SEPTEMBER	1.094
MEI	0.808	OKTOBER	1.559
JUN	0.907	NOVEMBER	1.442
JULAI	1.646	DISEMBER	1.844

**KITAR SEMULA (Tan/Bulan)**

MAC	0.468	OGOS	1.566
APRIL	2.414	SEPTEMBER	1.609
MEI	1.920	OKTOBER	1.866
JUN	0.790	NOVEMBER	2.553
JULAI	1.579	DISEMBER	1.755

# TAPAK KOMPOS MPKJ



# CADANGAN 4- PENANAMAN POKOK



**JUMLAH POKOK YANG  
DITANAM  
: 46 POKOK**

**JUMLAH POKOK YANG  
DITEBANG  
: 41 POKOK**

**PERBELANJAAN  
: RM29,704.00**

# CADANGAN 4- PENANAMAN POKOK



# PENCAPAIAN LCCFTrack 2018

Year: 2018

Category	Element	*B.A.U (tCO <sub>2</sub> /y), B	L.C.S (tCO <sub>2</sub> /y), P	Difference, B - P	% Difference Achieved, B - P / B Absolute	Option Selected	Remarks
Landuse	Carbon Storage in Soil (Losses)	16.01	16.04	-0.0356	-0.22	Option 1	↑
	Carbon Sequestration by Vegetation (Losses)	0.00	0.00	Not Available	Not Available	Option 2	Not Available
Subtotal		16.01	16.04	-0.0356	-0.22		↑
Landscape	Carbon Storage in Soil	-22.37	-22.33	-0.0494	-0.22		↑
	Carbon Sequestration by Vegetation	-40.26	-40.17	-0.0888	-0.22		↑
	Carbon Sequestration by Trees (not within Open Space)	-19.12	-19.08	-0.0422	-0.22		↑
Subtotal		-81.76	-81.58	-0.1804	-0.22		↑
Embodied	Building Construction	1,480.76	1,484.05	-3.2886	-0.22		↑
	Infrastructure Construction	0.00	0.00	Not Available	Not Available		Not Available
Subtotal		1,480.76	1,484.05	-3.2886	-0.22		↑
Operational Carbon *	Energy	0.00	Not Available	Not Available	Not Available		Not Available
	Water	0.00	Not Available	Not Available	Not Available		Not Available
	Waste	606.77	529.68	77.0957	12.71		↓
Subtotal		606.77	529.68	77.10			
Transport *		0.00	Not Available	Not Available	Not Available	Corridor/Network/Cordon	Not Available
Total (tCO <sub>2</sub> /Year)		2,021.79	1,948.19	73.59	3.64	◆	<b>-3.64%</b>

\* Adjusted Baseline **Pengurangan sebanyak 73.59 ton karbon antara 2017-2018**

LCCF Evaluation Assessment and Low Carbon Performance	
Carbon Reduction	Level of Achievement
100%	Carbon Neutral
70-99%	Best Practice 5 (BP5) ◆◆◆◆◆
50-69%	Best Practice 4 (BP4) ◆◆◆◆
30-49%	Best Practice 3 (BP3) ◆◆◆
10-29%	Best Practice 2 (BP2) ◆◆
1-9%	Best Practice 1 (BP1) ◆

# CADANGAN 4– PENANAMAN POKOK

PELAKSANAAN TANAMAN POKOK DI SEKSYEN 9, BANDAR BARU BANGI

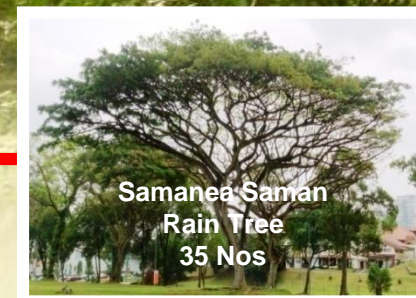
## CADANGAN KOS PENANAMAN POKOK

BIL	NAMA POKOK	KADAR PENYERAPAN / POKOK (CO2)	KUANTITI	HARGA (RM)	KOS (RM)
1	Pokok Cempaka Putih	756.59	10	624.00	6,204.00
2	Pokok Tampoi	126.51	20	624.00	12,480.00
3	Pokok Langsung	120.20	20	624.00	12,480.00
4	Pokok Jambu Bol	48.68	20	624.00	12,480.00
5	Pokok Bunga Tanjung	34.29	22	624.00	13,728.00
6	Pokok Hujan-hujan	28,448.39	35	624.00	21,840.00
7	Pokok Kiara Payung	404.83	31	689.00	21,359.00
<b>JUMLAH</b>			<b>158</b>		<b>100,607.00</b>

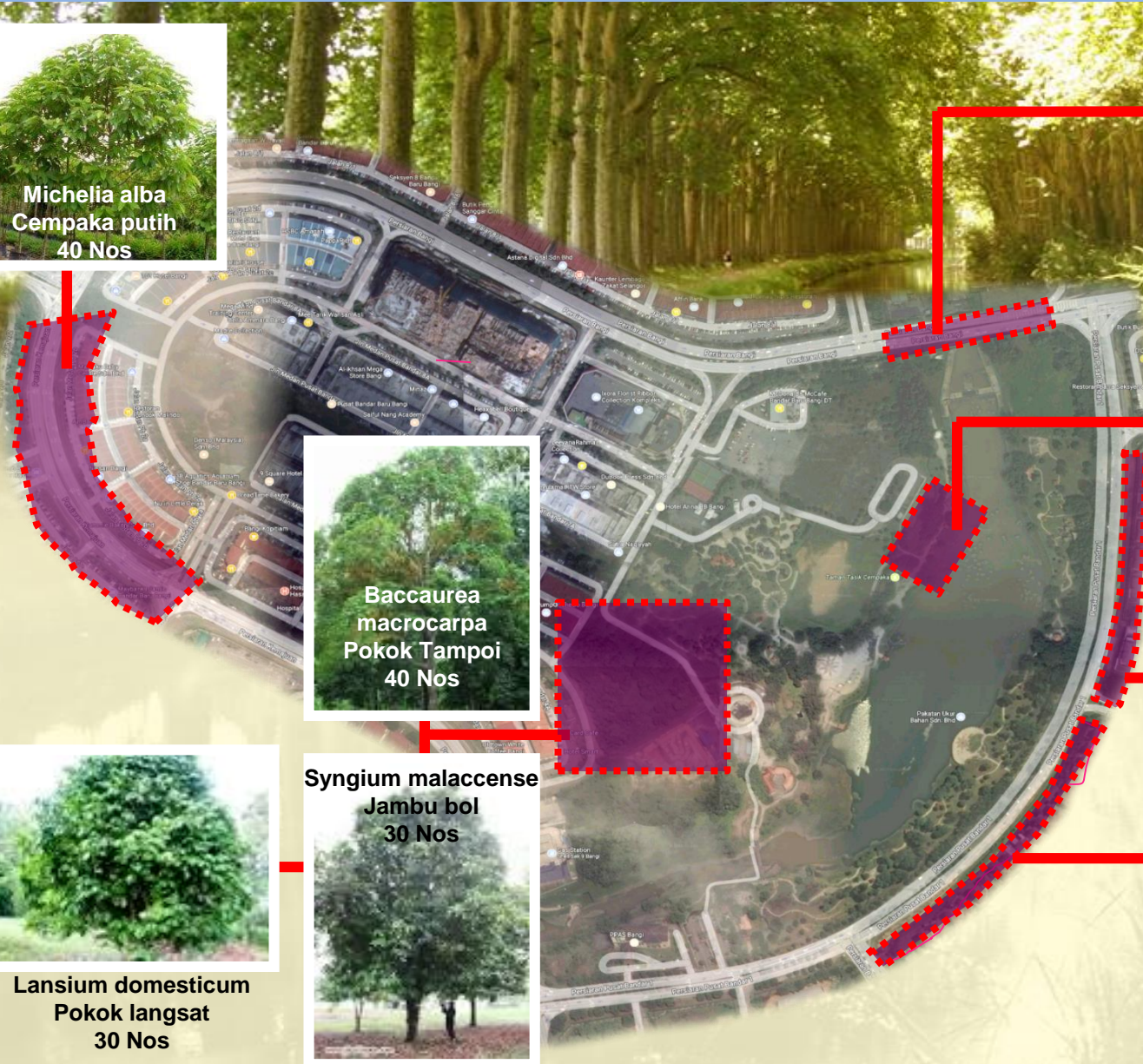
**Status: Dalam proses kelulusan kertas kerja  
: Dijangka bermula pada Mei 2019**

# CADANGAN 4- PENANAMAN POKOK

## CADANGAN POKOK & CADANGAN INVENTORI TAPAK 2018

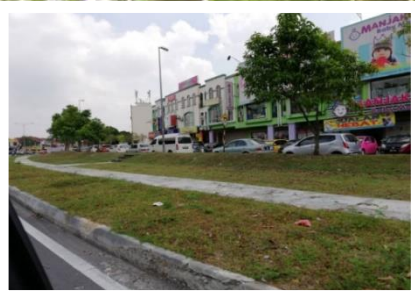


**Lansium domesticum**  
Pokok langsung  
30 Nos



# CADANGAN 4- PENANAMAN POKOK

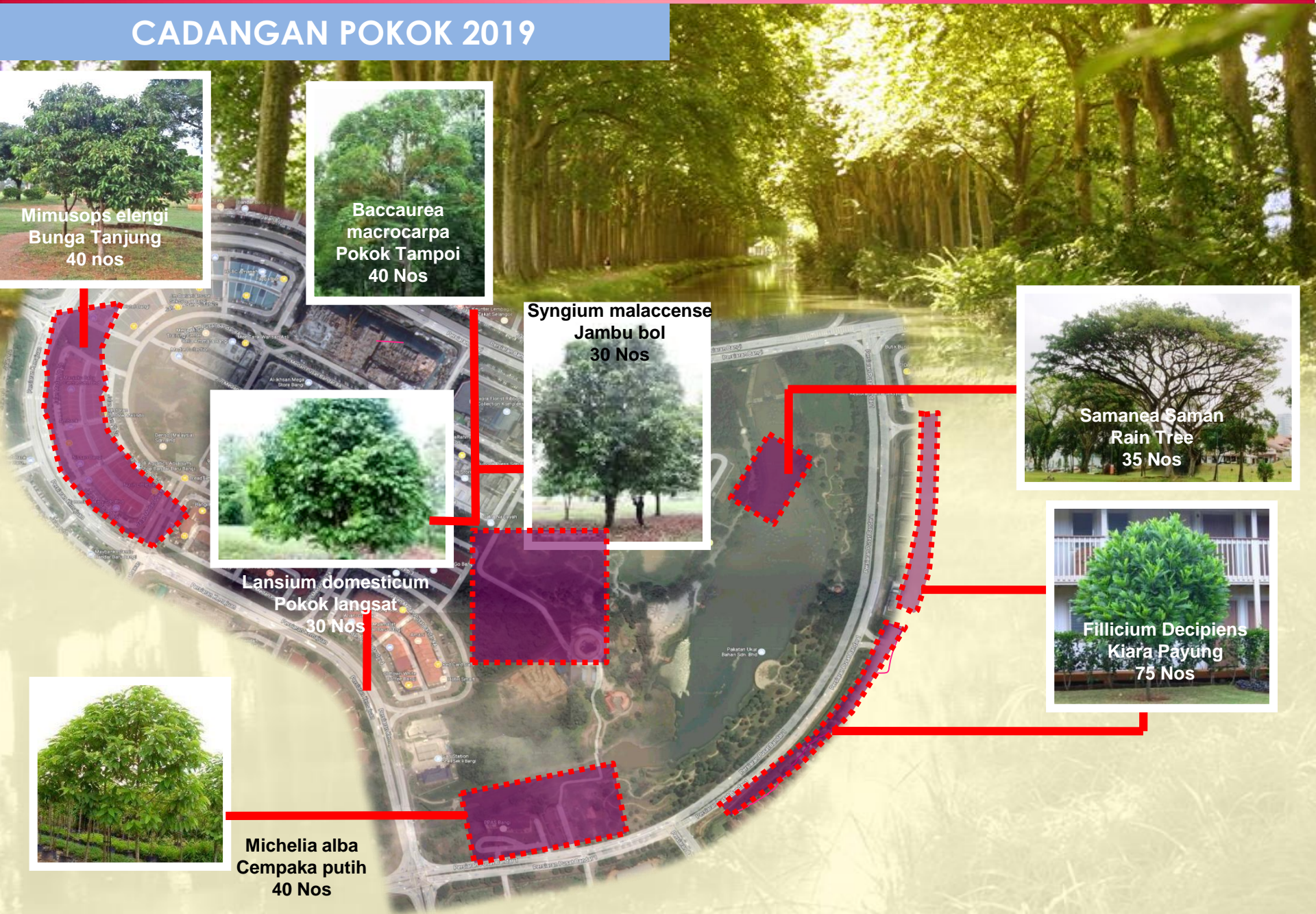
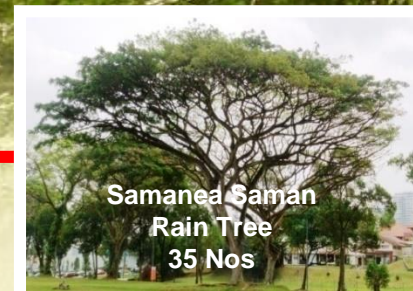
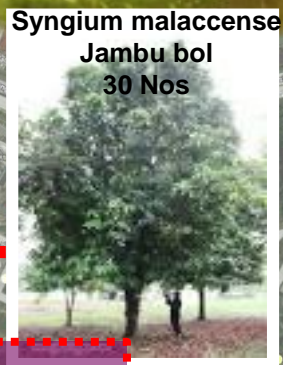
## CADANGAN INVENTORI TAPAK 2019





# CADANGAN 4- PENANAMAN POKOK

## CADANGAN POKOK 2019



## PENAMBAHAN 2 ELEMEN PENGUKURAN:

1

### TENAGA

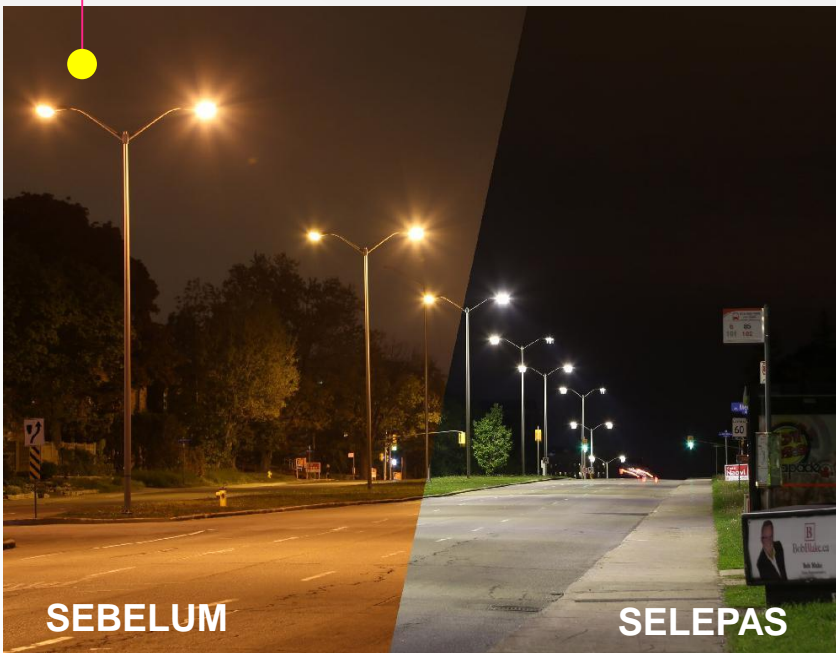
Penukaran lampu jalan konvensional (HPSV) kepada lampu LED

2

### PENGANGKUTAN

Bas Smart Selangor

- a) **KJ04:** Laluan Kompleks Hentian Kajang – Putrajaya
- b) **KJ05:** Laluan UKM – Kompleks Hentian Kajang – Pusat Bandar Baru Bangi



# CADANGAN LCCFTrack TAHUN 2019

## 1 TENAGA

Penukaran lampu jalan konvensional (HPSV) kepada lampu LED

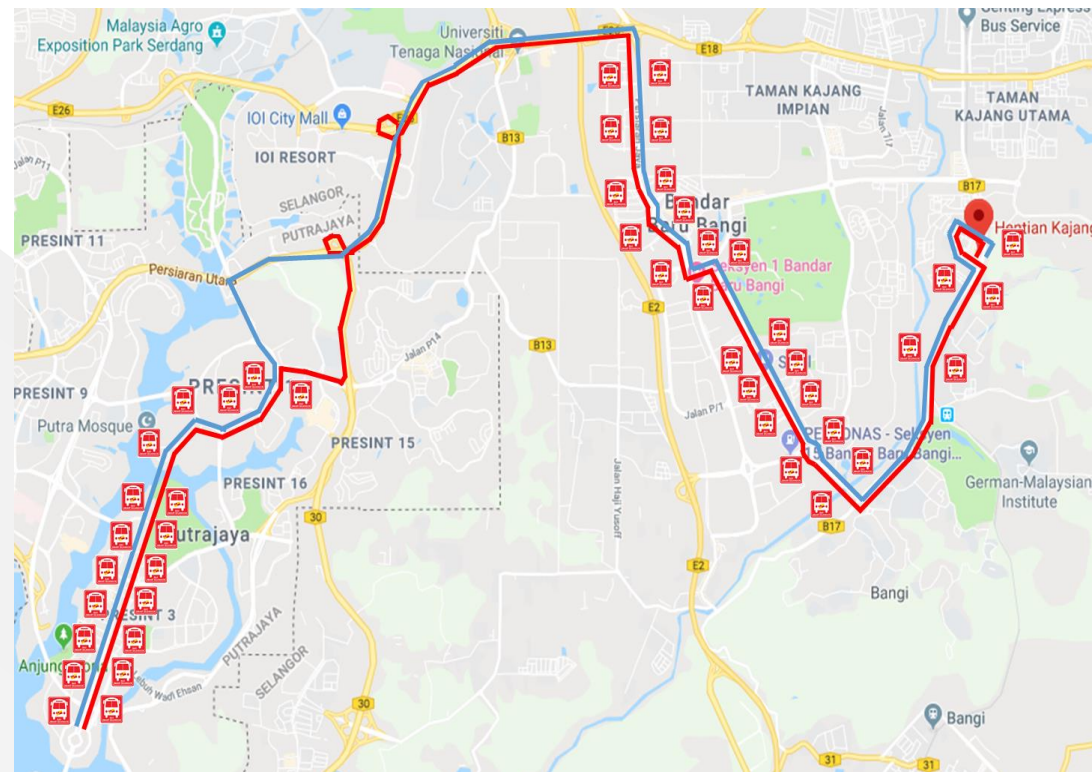
BIL	SEKSYEN	NO. UNIT LAMPU HPSV
1	Bangi Golf Resort	164
2	Bangi Lakehill Villa, Seksyen 6	29
3	D Cempaka, Seksyen 9	45
4	Kawasan Industri IKS, Seksyen 9	215
5	Kawasan Perindustrian, Seksyen 10	177
6	Kipmall	18
7	Mutiara Bangi, Seksyen 2	20
8	Puncak Bangi, Seksyen 6	48
9	Pusat Bandar Seksyen 9	137
10	Seksyen 3	136
11	Seksyen 4	137
12	Seksyen 5	67
13	Seksyen 6	21
14	Seksyen 7	136
15	Taman D7, Seksyen 7	90
16	Seksyen 8	123
17	Seksyen 13	131
18	Seksyen 14	65
19	Seksyen 15	117
20	Seksyen 16	131
21	Seri Bangi	131
<b>JUMLAH</b>		<b>2,138</b>

# CADANGAN LCCFTrack TAHUN 2019

## 2 PENGANGKUTAN

Bas Smart Selangor

a) **KJ04:** Laluan Kompleks Hentian Kajang – Putrajaya



25.9KM SEHALA

30 MINIT KEKERAPAN

3 BAS DIESEL

WAKTU BEROPERASI :  
6 PAGI – 9 PAGI  
4 PETANG – 7 MALAM

**PETUNJUK :**

HENTIAN BAS 

LALUAN PERGI 

LALUAN BALIK 

# CADANGAN LCCFTrack TAHUN 2019

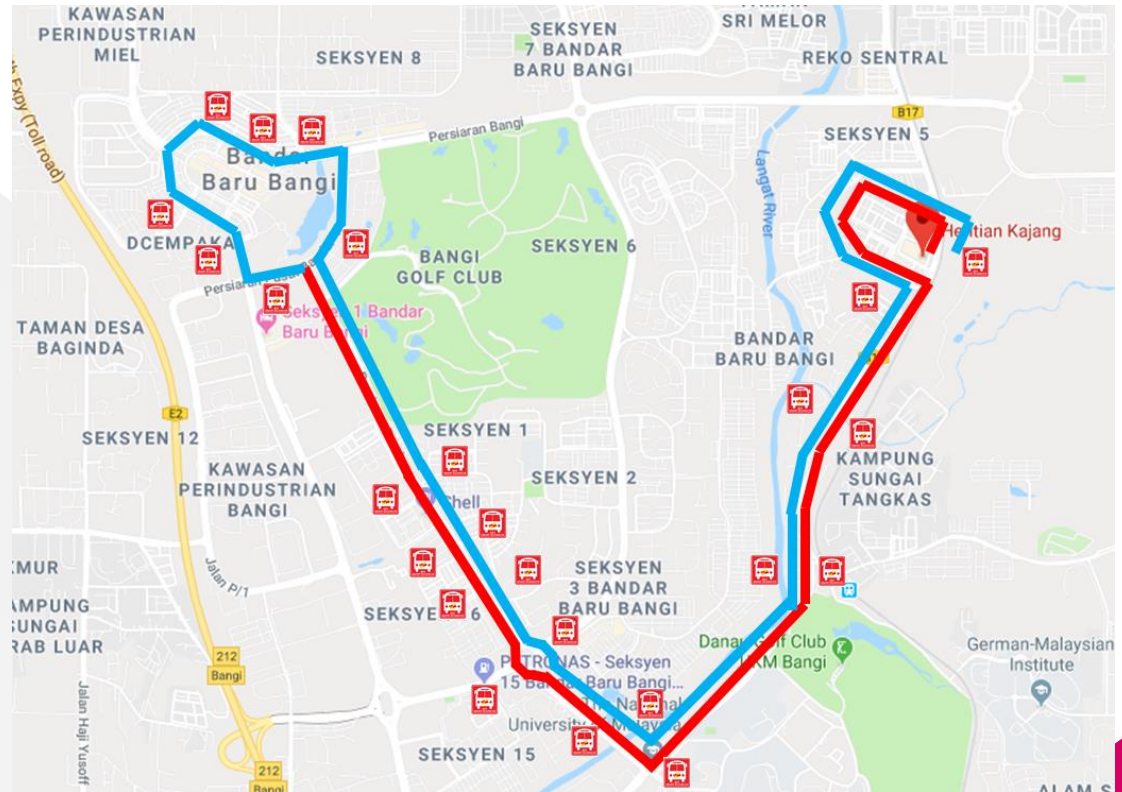
## 2 PENGANGKUTAN

Bas Smart Selangor

b) **KJ05:** Laluan UKM – Kompleks Hentian Kajang – Pusat Bandar Baru Bangi

### KJ05

KOMPLEKS HENTIAN KAJANG



8.8KM SEHALA

20 MINIT KEKERAPAN

2 BAS DIESEL

WAKTU BEROPERASI :

6 PAGI –10 MALAM

PETUNJUK :

HENTIAN BAS



LALUAN PERGI



LALUAN BALIK



*Sekian terima kasih...*

MAJLIS PERBANDARAN KAJANG  
SELANGOR DARUL EHSAN



**BERETIKA KEHIDUPAN BERKUALITI**